



CEF

Connect. Learn. Act.

SUPPORTING **CAPACITY DEVELOPMENT**
OF **PUBLIC OFFICIALS** AND THEIR **INSTITUTIONS**
IN **SOUTH EAST EUROPE**
THROUGH **LEARNING** AND **KNOWLEDGE SHARING.**

Jana Repansek, Director

jana.repansek@cef-see.org

www.cef-see.org





ACCOUNTING
AND FINANCIAL
REPORTING



AUDITING



DATA AND
ANALYSIS



FINANCIAL
STABILITY AND
PRUDENTIAL
SUPERVISION



FISCAL POLICY
MAKING



LEADERSHIP
FOR MANAGING
REFORMS



LEARNING AND
KNOWLEDGE
ECOSYSTEM



MONETARY
POLICY MAKING
AND FINANCIAL
MARKETS



SECTORAL
POLICY
MAKING

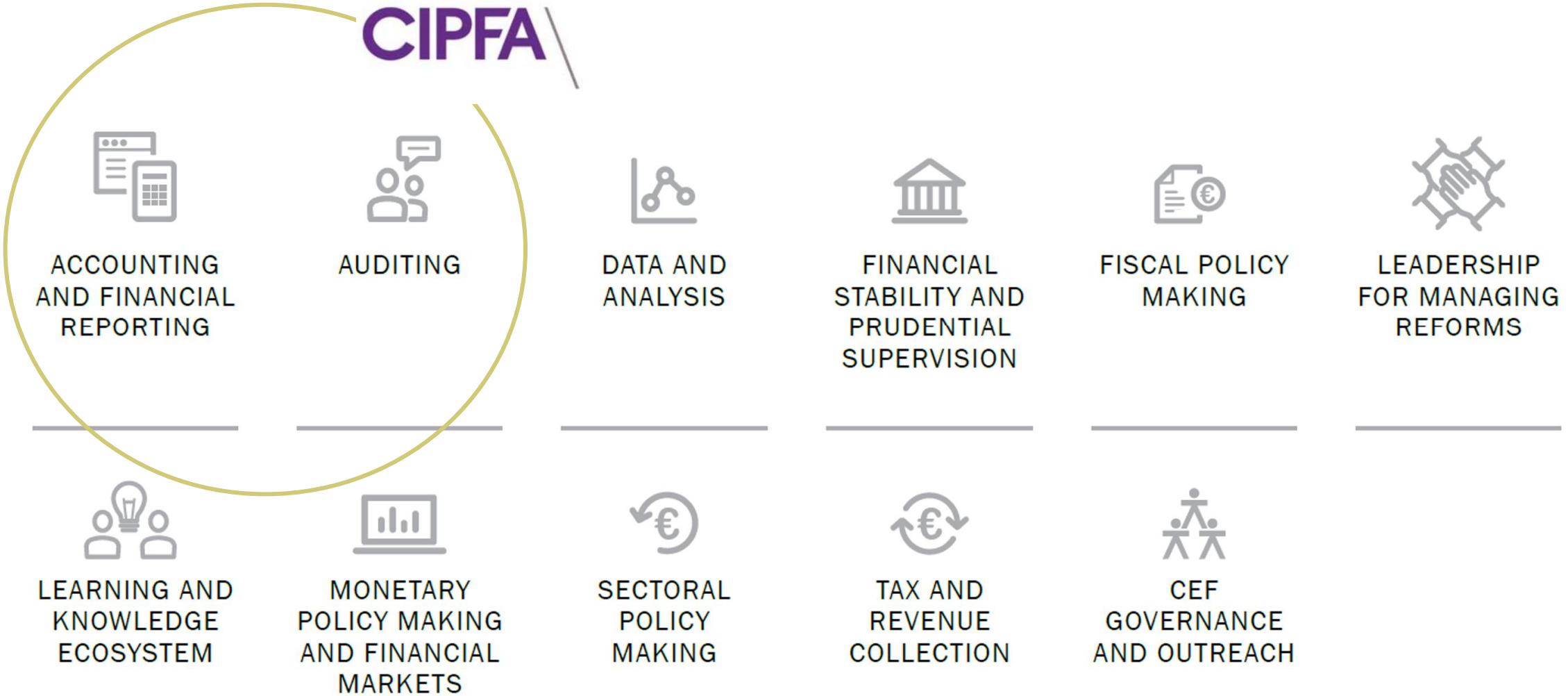


TAX AND
REVENUE
COLLECTION



CEF
GOVERNANCE
AND OUTREACH

CIPFA





ACCOUNTING
AND FINANCIAL
REPORTING



AUDITING



DATA AND
ANALYSIS



FINANCIAL
STABILITY AND
PRUDENTIAL
SUPERVISION



FISCAL POLICY
MAKING



LEADERSHIP
FOR MANAGING
REFORMS



LEARNING AND
KNOWLEDGE
ECOSYSTEM



MONETARY
POLICY MAKING
AND FINANCIAL
MARKETS



SECTORAL
POLICY
MAKING



TAX AND
REVENUE
COLLECTION



CEF
GOVERNANCE
AND OUTREACH





ACCOUNTING
AND FINANCIAL
REPORTING



AUDITING



DATA AND
ANALYSIS



FINANCIAL
STABILITY AND
PRUDENTIAL
SUPERVISION



FISCAL POLICY
MAKING



LEADERSHIP
FOR MANAGING
REFORMS



LEARNING AND
KNOWLEDGE
ECOSYSTEM



MONETARY
POLICY MAKING
AND FINANCIAL
MARKETS



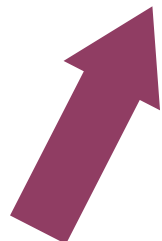
SECTORAL
POLICY
MAKING



TAX AND
REVENUE
COLLECTION



CEF
GOVERNANCE
AND OUTREACH





ACCOUNTING
AND FINANCIAL
REPORTING



AUDITING



DATA AND
ANALYSIS



FINANCIAL
STABILITY AND
PRUDENTIAL
SUPERVISION



FISCAL POLICY
MAKING



LEADERSHIP
FOR MANAGING
REFORMS



LEARNING AND
KNOWLEDGE
ECOSYSTEM



MONETARY
POLICY MAKING
AND FINANCIAL
MARKETS



SECTORAL
POLICY
MAKING



TAX AND
REVENUE
COLLECTION



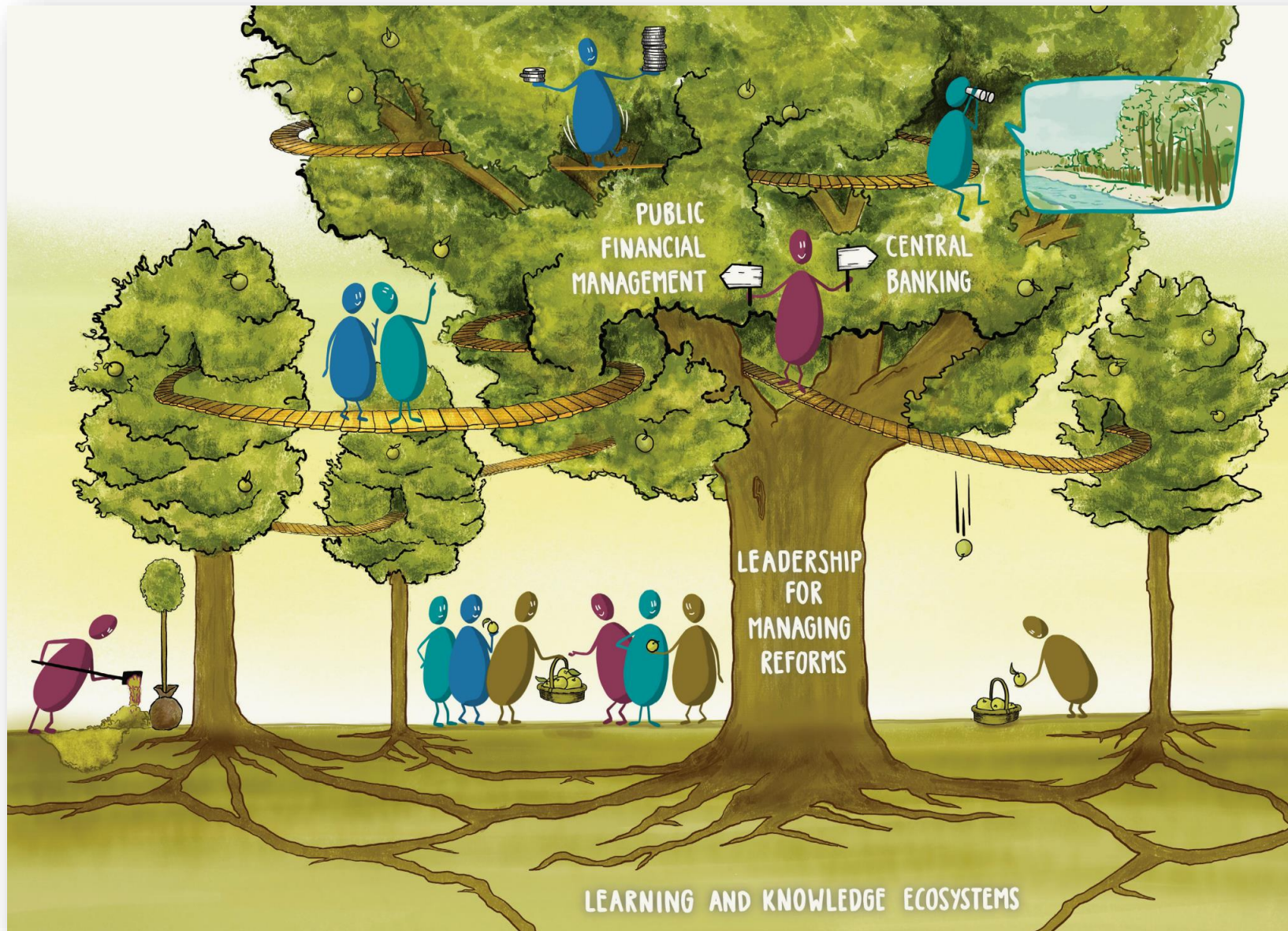
CEF
GOVERNANCE
AND OUTREACH



**TECHNICAL –
FOCUSED ON
FINANCE**



**NON-
TECHNICAL –
FOCUSED ON
PEOPLE
(THAT WORK IN FINANCE)**



CAPACITY DEVELOPMENT IN PERPETUAL VOLATILITY requires:

1. Focus on **people** in finance, not just finance.
2. Focus on **teams** and **institutions**, not just individuals.





AS LEADERS IN LEARNING,
WE INSPIRE PUBLIC OFFICIALS,
BOTH INDIVIDUALS AND TEAMS,
TO SHAPE INSTITUTIONAL GOVERNANCE
THAT DRIVES
SUCCESSFUL ECONOMIES AND FAIR SOCIETIES.

Jana Repansek, Director

jana.repansek@cef-see.org

www.cef-see.org